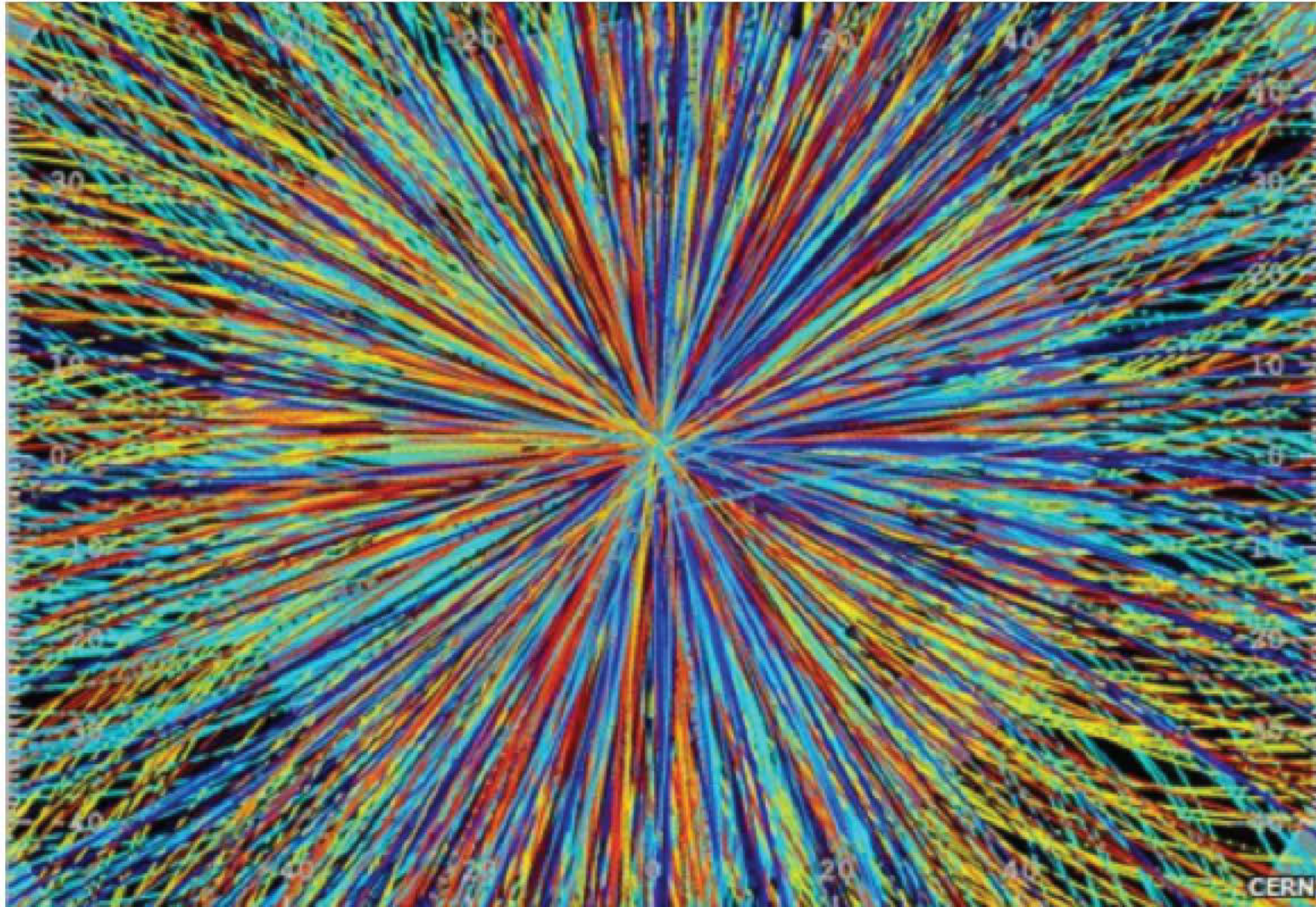


ASE interacts



The Association for Science Education
Annual Report 2011/12

Chair's introduction – Lynne Horton CSciTeach

The past year has been a transition year as the Assembly and new Council began a new chapter in the history of the ASE. As Chair of the Association my role was to lead the Assembly. Starting more or less with a blank piece of paper and ably supported by Richard Needham as past Chair and Liz Lawrence as Chair Elect we carefully planned the Assembly meetings to ensure the views of all the Assembly members were taken into account. The aim was to have the maximum diversity of the membership represented at these meetings with the focus on science teaching and learning. Meanwhile the trusteeship of the Association was continued through the Council meetings where the place reserved for the Chair of the Association was delegated to the past Chair. More about the Assembly later!

During my year as Chair I have had the privilege of representing the ASE at conferences, starting with our own Annual Conference in Liverpool where I was inspired as always by many learned colleagues. Yet another group of amazing primary science teachers were awarded the Astra Zeneca Primary Science Teacher of the year awards and equally amazing those colleagues who stepped in at the very last minute to deliver probably the best ever presentation after those awards. I would also like to thank the ASE conference team who work tirelessly often behind the scenes to ensure the conference runs smoothly. I attended the Scottish conference where a broad range of engaging hands-on sessions ran alongside the Conference, giving the whole event



Lynne Horton



10 Trustees sat on ASE's new council

a fantastic family atmosphere. It was an excellent reminder that what we are all here for is the teaching and learning of science for young people.

The first Assembly was held in October 2011 at ASE HQ and following a brief opportunity to get to know our colleagues we started to investigate the expectations of the Assembly members. There was a refreshing mix of experienced ASE members from the previous Council and some newly elected members. As the various groups reported back on their discussions it was clear that some were concerned with the needs of individuals, and some were concerned about the needs of science education. The suggestions fitted broadly into three categories: membership, influence and communication. The issues associated with these categories are: the importance of providing the quality membership benefits that will retain and increase our members; making sure that ASE has influence at the highest levels and responding to the many consultations and communication which, although improving, remains high on the agenda.

The second Assembly meeting was held in February 2012 and in order to improve communications with all our members I requested volunteers to act as roving reporters for the day. My thanks go to the two members who by the following Monday had the main findings of the meeting on the ASE website. After considering some details we got down to the business of responding to the Presidential Address. We were fortunate that our current



Incoming Association President Robin Millar receives his Honorary Membership from Association Chair Lynne Horton

29 volunteer members joined the new ASE Assembly

president Professor Robin Millar took such an active interest in the Assembly and joined us to lead this session and share some of his current work. Another communication route open to all members is through writing an article for an ASE journal and to help with this the journal editors led a session. We also included an opportunity for one of the Council members to feed back to Assembly, again to facilitate two way communications between the trustees and membership and this was to become a regular opportunity. Drawing up the Assembly action plan was next on the agenda to fit with the mission and vision of ASE and this can be seen on the website. Finally at Assembly 2 we started small working groups. Key to the success of these has been the time and effort that Assembly members have given between the meetings, often using the ASE forum (which is open to all ASE members) in order to make progress and report back at the next meeting.

To consolidate the first year of Assembly the final meeting was held in May. As one of the reasons given by Assembly members for joining was to influence national decision making in science education it was timely for Marianne Cutler, Director of Curriculum Development to give us an update on recent and current consultations. Assembly member Rob Butler led a working group looking at the workings of the forums and other aspects of the website which then made recommendations to Council after they were shared and discussed in the Assembly.

There was again an opportunity for a Council member to update Assembly and take any questions back to Council.

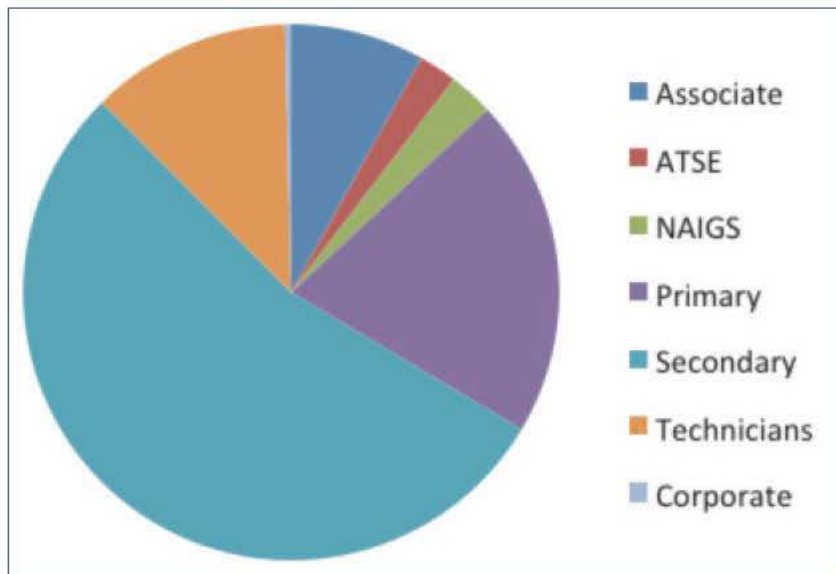
The afternoon teaching and learning session was led by Robin Millar who shared some of his current work on the curriculum considering core science knowledge. This for me is one part of the meeting that needs to be expanded as the priority for Assembly is to focus on teaching and learning in science.

As I reflect on the past year, the evaluations from Assembly members and the beginnings of this new chapter for the ASE I want to thank my predecessor Richard Needham, Liz Lawrence, Assembly and Council members and the ASE staff at HQ for their continued commitment to our Association. I am looking forward to supporting Liz in her role as Chair during this next exciting chapter in the history of the ASE as we move into our 50th Anniversary year.

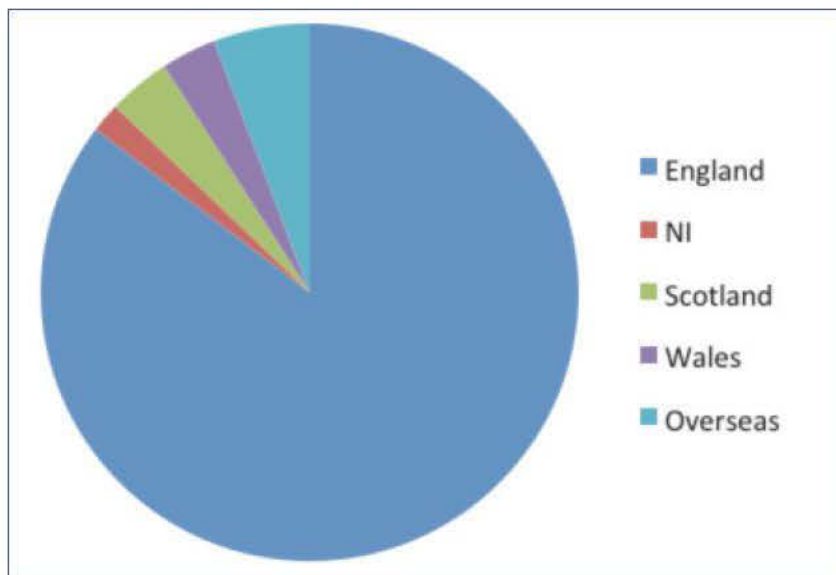


Measuring ASE's impact – membership and book sales

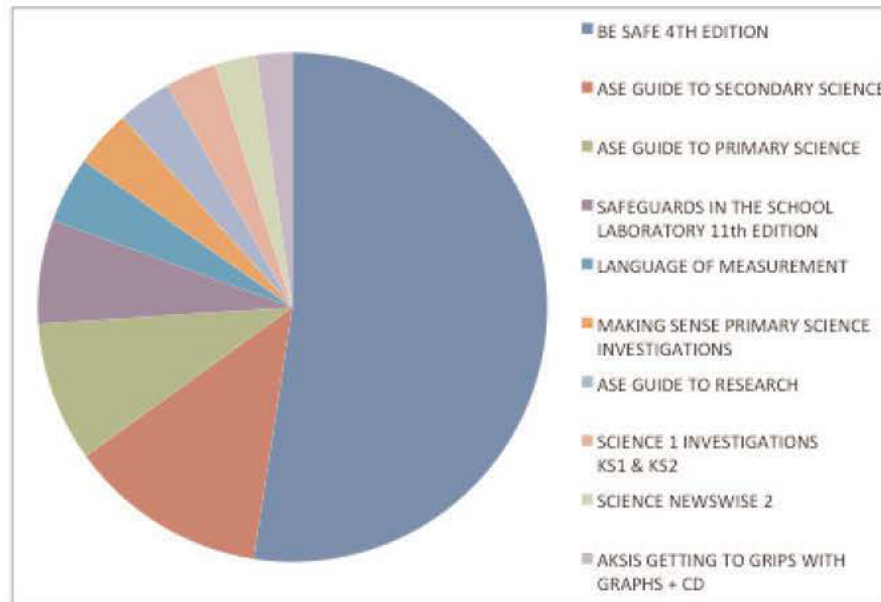
1. Who are our members?



2. Where are our members?



3. ASE's best-selling books



Measuring ASE's impact – interactions in 2011-12



During the year, ASE interacted with many individuals and organisations.....



ASE Presidents –
Professor Steve Jones and
Professor Robin Millar

56 Media releases told the world what ASE thinks and does



ASE worked with **350** Partners and Supporter organisations



ASE had **2500** Twitter followers and **428** Facebook friends

The ASE website had **141,000** visitors and **1,000,000** page views

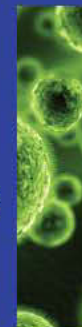


29 volunteer members joined the new ASE Assembly

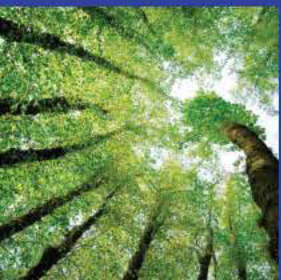
10 Trustees sat on ASE's new council



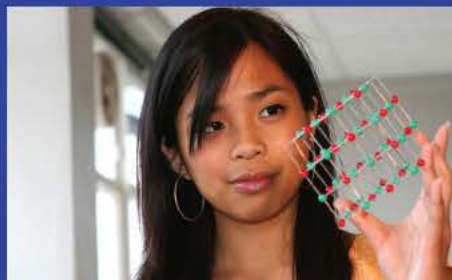
180 member volunteers served on ASE regional committees



220 member volunteers served on ASE membership and expert committees



300 writers contributed to ASE's **5** journals



The schoolsience website received **1,000,000** visitors and **4,000,000** page views



ASE provides support and services to over **15,000** science educators

Highlights of the year 2011-12



Awarding of the first Registered Science Technician certificates by Lord Sainsbury and Secretary of State Vince Cable

The following were major highlights of 2011/12

- Governance changes come into operation in August 2011 with new Assembly and Council
- Launch of new Registers RSciTech and RSci
- Annual Conference welcomes our President Professor Robin Millar and Judith Hackitt of HSE, Professor Michael Reiss and many more high profile speakers
- Presidential address sets the agenda for the year
- Online elections for positions on Assembly, Council and Chair-elect take place
- Steve Marshall delivers ASE Honors Lecture at NSTA Conference in Indianapolis
- Electronic communications go from strength to strength
- Campaign on practical and outdoor science continues
- Anniversary Appeal launched



Judith Hackitt CBE,
Chair HSE
and
Professor Michael Reiss

Achievements and performance

The Association for Science Education operates to a series of five year Strategic Plans which state our mission and vision, our beliefs and the ways in which we work. Each year the priorities for action are extracted from the Strategic Plan and set alongside the budget to form the annual Business Plan. Following the change to ASE's governance structure the Strategic Plan has been redrafted for the 2012/13 year of operation and for the subsequent five years, but for the year 2011/12 the key objectives were:

1. To sustain the growth and influence of ASE;
2. To ensure that ASE has a leading role in the development of science education;
3. To strengthen the local, regional and national networks of ASE;
4. To improve the professional standing of those involved in science education;
5. To extend the contribution ASE makes to science education both in the UK and internationally by strengthening ASE's position as a preferred and trusted partner in projects and programmes;
6. To ensure that ASE operates on a sound business footing, employing exemplary financial, risk management, data handling and HR practices and taking care to maintain and improve the systems which support these operations.

ASE worked with **350** Partners and Supporter organisations

The Association is structured as a charity, registered with the Charity Commission in England and with the Office of the Scottish Charity Regulator in Scotland and incorporated by Royal Charter. As such, we are obliged in law to confer public benefit – we do this through our aims which are wholly concerned with education. The aims express a commitment to improving science education for all young people, primarily but not exclusively across the UK. This is achieved by supporting teachers and others concerned in the provision of science education in schools and colleges and by influencing components of society, including government, such that science education can flourish.

In a very difficult economic environment and a constantly changing educational scene, ASE has been able to make progress with the Strategic Objectives. The major structural change to the governance was a key feature of the year and this has influenced all of our work. Towards the end of the financial year the Anniversary Appeal was launched with a Summer Celebration Conference as its centrepiece and the Anniversary Book as a tangible outcome.

Communications, membership and governance

Membership is a key issue for ASE and the intelligent use of data in order to retain and recruit members improved during the year. Membership data for all categories was plotted to show trends and facilitate on-going analysis and also to map categories across the UK. Actions based on the outcomes of the most recent membership survey were implemented, and staff met to agree upon actions to take forward on retention and recruitment. Membership benefits were focused on the needs of the profession – for example discounted professional indemnity insurance was arranged through ASE's insurers. A new Commercial Corporate membership was introduced with benefits including a termly newsletter and a set of meetings with key experts from ASE's Assembly.

The new Journal of Emergent Science is now established and is widely promoted.

Numerous improvements to ASE communications activity took place, including enhancements to the website, increased frequency of e-alerts and more sophisticated use of social media. Brand consistency was improved and the use of the ASE logo was monitored more closely.

The Scitutors and NAIGS websites were incorporated into the main ASE website. The editorial management rests with these groups. The SchoolScience website was redeveloped and re-launched with more emphasis on fresh, up to the minute news, competitions and resources. It now includes embedded advertising features giving the potential for increasing revenue.

Following the 2011 AGM at which the necessary Rule Change was agreed, elections were held during early summer of 2011. The new Governance structure was put in place, with a smaller trustee body and ASE's leading science education discussion forum, the "Assembly". During 2011/12 the new Council was supported by finance training and online training modules. The process to renew the operating procedures of ASE in line with the new structures was commenced and a full review of the regional and Committee structure made significant progress. Further elections were held in early summer 2012 using the online system. The Quality and Audit committee oversaw the changes and made suggestions on behalf of the membership.

A new Strategic Plan was developed with input from Council, Assembly, staff and all members assisted by an external consultant from the Worshipful Company of Management Consultants. This will be in place from August 2012.

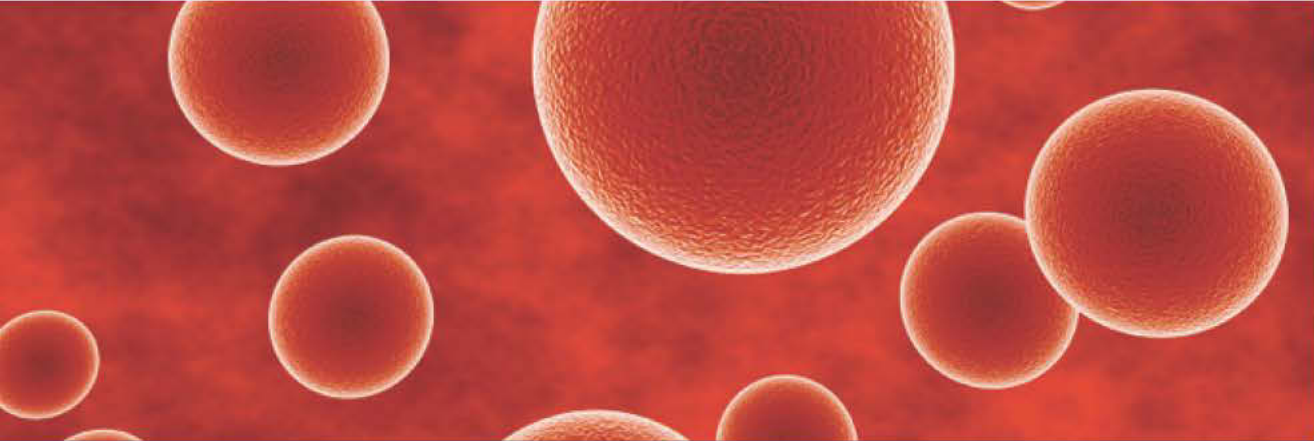
ASE's voice and support for science education nationally

ASE responded to a number of consultations and Government Select Committee inquiries, often as a member organisation of SCORE, covering the following areas: Early Years Foundation Stage, qualifications and assessment, the National Curriculum, initial teacher education and the Higher Education white paper. Responses are informed by discussions with key committees and special interest groups and by surveys of the membership

The schools
science
website received
1,000,000
visitors and
4,000,000
page views

 schools
science.co.uk

 ASE online



56 Media releases told the world what ASE thinks and does

and through the web forums and are accompanied by press releases and web announcements. Richard Needham, Chair of Council and immediate past-Chair of the Association, joined Marianne Cutler, Director of Curriculum Development on the SCORE committee under a volunteer agreement – the first of its kind for ASE.

The Chief Executive spoke at the Westminster Education Forum on the National Curriculum and at the Holyrood Conference and wrote numerous articles for educational journals.

ASE was represented on the Department for Education informal advisory group in developing the National Curriculum, and continues to be involved in an advisory capacity as the primary Programme of Study is being developed.

ASE responded to the Royal Society "Visions for science education 5-19" consultation, through its active committees and special interest groups and will continue to be engaged as this project continues.

ASE in the Regions of the UK

180 member volunteers served on ASE regional committees

The changes in the structure of Field Officers' regions meant that those in England spent some time adjusting their work practices in their new or modified regions. They established relationships with the region committees and moved towards delegating more activity to the region committees.

To aid communication, a very successful campaign was conducted through the Regions to increase the percentage of members' email addresses held on the HQ database. Region and national calendars of events are now in place on the website and a guide to the organisation has been produced by the Regional team. New forms of meeting have been encouraged, such as Teachmeets, which have proved very popular and good relationships exist in all English Regions with the local Science Learning Centres with frequent collaborations and joint events.

Professionalism and support for science education

ASE is committed to supporting members as they develop in the profession. In 2011/12 significant steps forward were made. Firstly the new Registration Board was established. This required a change to the By-laws of the Association in order to draw members from the whole of the membership, not just the Council. The By-law change was passed by the AGM in January 2012. The other major development was the piloting of the new Registers – Registered Scientist for early career science teachers and Registered Science Technician for school laboratory technicians.

CSciTeach

Chartered
Science Teacher

RSci

Registered
Scientist

RSciTech

Registered
Science Technician

An external assessor group to advise the Registration Board was set up and registration commenced strongly. As with Chartered Science Teacher, the new Registers run under the aegis of the Science Council. At the end of July 2012, there were 160 Chartered Science teachers, 41 Registered Scientists and 29 Registered Science Technicians. A statement on professionalism to underpin the new registers is being developed.

In order to promote the new Registers, a project is being undertaken with the Gatsby Foundation to raise awareness generally and particularly with head teachers and other school leaders.

Part of the requirement to maintain CSciTeach is the keeping of a professional development record the facility for which is available on the ASE website.

The provision of CPD for teachers and technicians remains under consideration as the landscape is changing. Opportunities to take a strategic role have been taken when they arise. For instance a partnership with MyScience on the technicians' annual conference brings benefits to both partners. Projects involving resource development are designed to include a professional development aspect, where appropriate. For example, the publication "It's Not Fair or is it?" which was developed in partnership with Millgate House Education enables both partners to run professional development sessions alongside the sales of the book. In a difficult year for attracting new projects a system was developed to monitor project proposals and to take advantage of potential leads. Projects generally have progress reports in the form of articles for ASE's journals. All projects, and project proposals, have built in monitoring, evaluating and reporting periods. During this financial year, ASE was involved with the following:

- Upd8's new GCSE 'Crucial' resources – under a new MOU with the Centre for Science Education
- collecting information for case studies for the Triple Science Support Programme
- The Researchers in Residence project (which was curtailed ahead of the planned time)
- The Getting Practical, Improving Practical Work in Science across the primary-secondary transition (in partnership with CLEAPSS and supported by AZSTT)
- Primary Science Quality Mark which has continued to be successful, driving the increase in primary membership and making a significant difference in the schools in which it operates.

Area Conferences are being kept under review and carefully developed in partnership with the regions involved. The Annual Conference in Liverpool was successful, although there was a lower attendance, as there often is in this location. The Presidential Address was a masterly presentation by Professor Robin Millar which has helped to set the agenda for discussions throughout the year. A practical science round table event involved our outgoing President, Professor Steve Jones and the Chair of the Parliamentary Science and Technology Committee, Andrew Miller MP.

In response to evaluation it is clear that the Annual Conference needs to develop towards a high quality, slimmed down event with minimal clashes of similar sessions. The format of the Programme Preview and Handbook will be revised to reflect users' views and make them more user friendly for particular audiences. The learning from this evaluation will go forward to inform the Summer Celebration Conference in 2013.

50 #ASE chats held over the year with about **40** participants each Monday evening

The #ASEchat Twitter discussion, which takes place on Monday evenings from 8pm has proved very popular and provides high quality professional development using this novel format. This initiative is highly regarded across the profession.

Outdoor Science panel discussion at the ASE Annual Conference



An improved rationale for developing new book publications is in place, following the publication of the Primary, Secondary and Research Guides, the new edition of Be Safe! (now available in Welsh) and the Hodder collaboration which produces the Science Practice books. In addition a more focused marketing plan is in place.

International interactions

The International Day at the Annual Conference was well attended in Liverpool and this is a valuable opportunity for ASE to interact with our colleagues from overseas. The other opportunity to do this is at the NSTA conference in the United States. This is an enormously valuable opportunity to monitor developments, not just in the US but with colleagues from all over the world and the developments with the US Core Standards in science made it particularly interesting as we move towards a new National Curriculum in England.

ASE continues to keep in touch with the ICASE board, but the structure is not yet suitable for ASE to re-join.

Following the committee restructuring exercise which is currently under way, there will be an opportunity to refocus the activity of the International Committee, which will be a timely exercise. In the meantime, opportunities are taken for collaboration with well-established partners; for instance MNU of Germany.

ASE's Research Series at the annual conference, which included international science education speakers, was a significant contribution to the conference programme, although for the future, attracting larger audiences will be a priority.

220 volunteer members served on ASE membership and expert committees

Organisational progress



INVESTOR IN PEOPLE

ASE was successfully re-assessed for the Investors in People standard. Among the improvements noted compared with the previous assessment, the appraisal system and the appointments process, which have been improved year on year, were mentioned.

The management accounting reports are now published monthly and monthly exception reports are produced for Council in these challenging times. All documentation such as the Privacy Policy, Terms and Conditions, Data Protection and Web policies has been updated.

The monitoring of energy usage has been difficult as our University landlords have still not completed the necessary work with the result that they have agreed not to charge ASE retrospectively.

Regions and Committees receive information on income and expenditure to an agreed format and timing. This process brings regional accounting into line with charity best practice.



Honorary Treasurer's Annual Report 2011/12

Last year's report was to have been my final one as Treasurer. However, the Trustees realised that under the new governance rules, it was possible for the Treasurer to serve for up to six years. As the Treasurer has to report at the AGM on the previous year's accounts, it is much more sensible to hand over after that report has been delivered and I therefore agreed to stay on until the 2013 AGM.

The Association has had another very challenging year. Although budgeting is now much better than it was five years ago and trustees receive regular, detailed reports about the Association's finances it has so far proved difficult to take much remedial action during the course of the year. Although the Annual Conference in Liverpool made a reasonable surplus it was significantly less than had been hoped for, with income from both visitors and exhibitors down. The comparative year-by-year figures need to be interpreted with caution because in previous years most delegates stayed in halls of residence (and hence the money passed through our accounts) whereas at Liverpool delegates directly booked their own accommodation in hotels. Estimates of income from book sales also proved to be optimistic. Whilst the SchoolScience website and some projects generated useful income, given the economic and political climate it will be no surprise that overall income from projects was disappointing, as was advertising income from our journals. Changes in governance have so far produced very modest cost savings. In common with most comparable organisations, our membership has continued to decline although income was slightly better than budgeted. As a result of the redundancies last year, staffing costs were significantly reduced. Since our move to the new building, the University has not been charging us for electricity. Although we had made provision for this, the University has now agreed to write it off. The closure of region bank accounts resulted in the return of some £8k to HQ. There were various other cost savings. The budget agreed in September 2011 provided for a surplus of £30k but in the event we ended the year with a deficit of £29k. The net effect was that our reserves are now at a very low level. Strategies we adopting to tackle the problem include publishing only four issues of Education in Science this year, not filling vacancies and asking our ever-loyal staff to take a pay cut.

There are nevertheless some reasons to be a little more optimistic about the future. The trustees are now much more aware of our on-going financial situation. The financial management system gives much improved data and budget holders are being held more rigorously to account. Although membership has continued to decline there are some signs that this may be beginning to tail off. 2013 may turn out to be the most difficult year in the Association's 50-year history but it also presents a wonderful opportunity. The 50th anniversary should bring welcome publicity, raising awareness and perhaps boosting membership. The Anniversary Appeal and associated Anniversary Conference could raise sufficient money to increase our reserves significantly. Leaving aside any surplus from the anniversary activities, the Trustees have agreed a more or less break-even budget.

In the longer term the Trustees need to think about what sort of organisation we should be. It seems very unlikely that we will ever recover to the membership levels of 15 years ago unless we come to terms with the fact that electronic communication is replacing physical attendance at meetings. It is also unlikely that income from advertising will increase much in the next few years. Although our role in projects is an important part of our charitable activities we need to review how these can be funded. In short, we need a long-term vision of what our Association is for, the structures and staffing required to achieve that and a route map to get us there from where we are now.

Dr Peter Borrowes (Honorary Treasurer)

Towards the next 50 years

The current landscape for ASE is difficult, but there is much to do. Despite large programmes of activity and considerable attention over the past 8 years, the situation in schools is far from perfect. Excellent teaching and learning of science exists but it is by no means available to all young people and many science teachers are unsupported in their professional development. So there is much to do, and ASE is an essential part of the future landscape. We have to ensure that our financial future is secure in order to do this important work, so in the Business Plan for 2012/13 the Key Strategic Objective which is concerned with ASE as an organisation is clearly addressed. Our focus must be on the individual as a professional in science education and the support that they need in order to become excellent. ASE is uniquely placed to think in this way and to react quickly.



Statement of Financial Activities for the year ended 31 July 2012

	Unrestricted Funds £	Restricted Funds £	<u>2012</u> Total Funds £	<u>2011</u> Total Funds £
Incoming resources				
Incoming resources from generated funds				
Voluntary income	1,999	-	1,999	6,940
Investment income	1,996	-	1,996	11,877
Incoming resources from charitable activities	1,387,928	303,471	1,691,399	2,176,234
Total incoming resources	<u>1,391,923</u>	<u>303,471</u>	<u>1,695,394</u>	<u>2,195,051</u>
Resources expended				
Costs of generating funds				
Investment management costs	951	-	951	1,648
Charitable activities	1,308,282	333,471	1,641,753	2,419,937
Governance costs	106,872	-	106,872	118,913
Total resources expended	<u>1,416,105</u>	<u>333,471</u>	<u>1,749,576</u>	<u>2,540,498</u>
Net (outgoing) resources before other recognised gains and losses	(24,182)	(30,000)	(54,182)	(345,447)
Other recognised gains and losses (Losses)/Gains on investment assets	(4,408)	-	(4,408)	19,169
Net movement in funds	<u>(28,590)</u>	<u>(30,000)</u>	<u>(58,590)</u>	<u>(326,278)</u>
Reconciliation of funds				
Total funds brought forward	40,223	42,019	82,242	408,520
Total funds carried forward	<u>11,633</u>	<u>12,019</u>	<u>23,652</u>	<u>82,242</u>

The net movement in funds arises from continuing operations.
There were no recognised gains and losses other than those dealt with above.

Balance Sheet

as at 31 July 2012

	2012 £	2011 £
Fixed assets		
Tangible assets	22,361	33,655
Investments	125,274	178,904
	<u>147,635</u>	<u>212,559</u>
Current assets		
Stocks	37,554	63,901
Debtors	112,152	189,881
Investments	258	44,778
Cash at bank and in hand	90,088	79,715
	<u>240,052</u>	<u>378,275</u>
Liabilities:		
Creditors: Amounts falling due within one year	(353,655)	(491,076)
Net current (liabilities)	<u>(113,603)</u>	<u>(112,801)</u>
Total assets less current liabilities	<u>34,032</u>	<u>99,758</u>
Creditors: amounts falling due after more than one year	(10,380)	(17,516)
Net assets	<u><u>23,652</u></u>	<u><u>82,242</u></u>
The funds of the charity		
Restricted funds	12,019	42,019
Unrestricted funds	11,633	40,223
Total charity funds	<u><u>23,652</u></u>	<u><u>82,242</u></u>

Approved by the Trustees on 24 November 2012 and signed on their behalf by
 behalf by Stuart Farmer Chair of Trustees



Notes to the Summary of Financial Statements for the year ended 31 July 2012

	<u>2012</u> £	<u>2011</u> £
1 Incoming resources		
Voluntary Income	1,999	6,940
Investment Income	1,996	11,877
Registration and Accreditation Income	635,904	662,430
Publications Income	112,625	135,248
Association journal income	123,029	155,065
Conferences Income	459,957	569,389
Other Income	56,412	61,272
Income from sponsored projects/INSET	303,471	592,830
	<u>1,695,394</u>	<u>2,195,051</u>
Resources expended		
Investment management costs	951	1,648
Members Registration & Services	200,441	203,326
Publications costs	120,892	200,816
Association journal expenditure	324,844	340,779
Conferences expenditure	409,272	622,230
Regional Expenses	99,976	145,283
Other Charitable Activity Costs	152,857	122,877
Project and Initiatives	333,471	784,626
Governance Costs	106,872	118,913
	<u>1,749,576</u>	<u>2,540,498</u>
Net (outgoing) resources before other recognised gains and losses	<u>(54,182)</u>	<u>(345,447)</u>

- 2 The financial information contained in this Report is a summary of the information extracted from and consistent with the annual statutory accounts.
- 3 The summary accounts may not contain sufficient information to allow for a full understanding of the financial affairs of the charity. For further information, the full annual accounts, the auditor's report on those accounts and the accompanying notes, Trustees report and Annual Report should be consulted and copies may be obtained from ASE, College Lane, Hatfield, AL10 9AA.
- 4 The full annual accounts have been audited and carry an unqualified audit report.
- 5 The financial statements were approved by the Trustees on 24 November 2012 and will be presented to members at the 2013 Annual General Meeting.

Stuart Farmer

Chair of Trustees



Independent Auditors' Statement To The Trustees Of The Association For Science Education Charity.

We have examined the summarised financial statements of The Association for Science Education set out on pages 12 to 14.

Respective responsibilities of the trustees and the auditor

The trustees are responsible for preparing the summarised financial statements in accordance with the recommendations of the charities SORP.

Our responsibility is to report to you our opinion on the consistency of the summarised financial statements within the summarised Annual Report with the full annual financial statements and the Trustees' Annual Report and its compliance with the relevant requirements of the Charities SORP.

We also read the other information contained in the summarised Annual Report and consider the implications for our report if we become aware of any apparent misstatements or material inconsistencies with the summarised financial statements. The other information comprises only the Chair's statement, Achievements and Performance 2011/12 statement and the Honorary Treasurers report 2011/12.

Basis of opinion

We conducted our work in accordance with Bulletin 2008/3 "The auditor's statement on the summary financial statement" issued by the Auditing Practices Board. Our report on the charity's full annual financial statements describes the basis of our audit opinion on those financial statements.

Opinion

In our opinion the summarised financial statements are consistent with the full annual financial statements and the Trustees' Annual Report of The Association for Science Education for the year ended 31 July 2012 and comply with the recommendations of the Charities SORP.

We have not considered the effects of any events between the date on which we signed our report on the full annual financial statements (24 November 2012) and the date of this statement.

H W Fisher & Company
Chartered Accountants
Statutory Auditor Acre
House
11-15 William Road
London NW1 3ER

The Association
for Science Education 