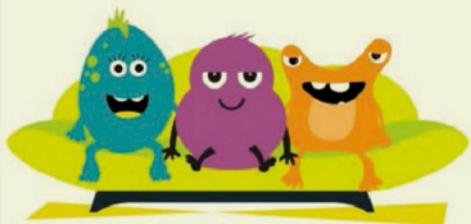


# NOTICEBOARD



## British Science Week 2021

With a theme of 'innovating for the

future', British Science Week 2021 will take place from 5 to 14 March. Grants and supporting resources to help your school plan and organise activities can be accessed through the website:

[www.britishsienceweek.org/a-sneak-peek-at-british-science-week-2021](http://www.britishsienceweek.org/a-sneak-peek-at-british-science-week-2021)



**Greater Manchester Engineering Challenge**

## Doing the E in STEM?

Take part in the award-winning Greater Manchester Engineering Challenge. GMEC 2021 is designed to inspire 7- to 14-year-olds

to engage with engineering processes and scenarios using project-based tasks linked to the National Curriculum for D&T, science and maths. All resources are now online. There is still time to take part, with the main challenge being launched on 8 March 2021. Contact SEERIH at [fascinate@manchester.ac.uk](mailto:fascinate@manchester.ac.uk) or go to:

[www.engineereducates.org](http://www.engineereducates.org)

[www.engineereducates.org](http://www.engineereducates.org)

## Great Science Share for Schools 2021

Have you registered yet? GSSfS is an award-winning campaign that allows 5- to 14-year-olds to share their own scientific questions and investigations. A brand new GSSfS Professional Development Podcast and Webinar series is starting on 25 February 2021. Created by your Regional GSSfS Champions, GSSfS Weekly Themes start on 3 May 2021 and the GSSfS Campaign Day is 15 June 2021. Register your pupils now at: [www.greatscienceshare.org](http://www.greatscienceshare.org)



## Free trees



**WOODLAND TRUST**

Trees are available to UK schools from the Woodland Trust for delivery in

March or November. For details and an application form see: [www.woodlandtrust.org.uk/plant-trees/schools-and-communities](http://www.woodlandtrust.org.uk/plant-trees/schools-and-communities)

## Royal Institution Science in Schools days

The Royal Institution Science in Schools grant scheme offers fully funded school visits from professional presenters worth £800. The days are designed to support children's science education, meet CPD requirements for teachers, engage families and



**The Royal Institution Science Lives Here**

raise funds for your school. Funded visits would need to take place before 30 September 2021. See: [www.rigb.org/education/stem-grants](http://www.rigb.org/education/stem-grants)

## FIRST® LEGO® League



**FIRST LEGO LEAGUE**

FIRST® LEGO® League engages young people in STEM learning and exploration from an early age. From

Discover, to Explore and then to Challenge, they are guided through the basics of STEM and apply their skills in an exciting competition while building habits of learning, confidence and teamwork skills along the way. For details go to:

[www.firstlegoleague.org](http://www.firstlegoleague.org)

## Farmvention

Farmvention (when farming meets invention) is a national STEM competition run by NFU Education and aimed at children aged 5–14 (school years 1–9) in England and Wales.



This year, the challenge is all about the problems that climate change creates for British farmers and how they are fighting it to become 'Climate Superheroes'. Entries close on 31 May 2021. See: [www.farmvention.com](http://www.farmvention.com)

## Royal Society Partnership Grants

Grants of £3000 are available to UK schools to

**THE ROYAL SOCIETY**

carry out investigative STEM research projects in the classroom in partnership with a STEM professional from academia or industry. More information is available from:

<https://royalsociety.org/grants-schemes-awards/grants/partnership-grants>